

MAINTENANCE

Scheduled Maintenance	Normal Usage		Severe Usage*	
Engine Oil and Filter	Replace	7,500 or 12 mos.	Replace	3,750 or 6 mos.
Tire Rotation	Perform	7,500	Perform	7,500
Air Cleaner Filter	Inspect Replace	7,500 30,000	Inspect Replace	Same As Normal More Frequently
Battery Condition	Inspect	7,500	Inspect	Same As Normal
Vacuum Hose	Inspect	7,500	Inspect	Same As Normal
Climate Control Air Filter (For Evaporator and Blower Unit)	Replace	15,000	Replace	More Frequently
Air Conditioning Refrigerant	Inspect	15,000	Inspect	Same As Normal
Brake Hoses & Lines	Inspect	15,000	Inspect	Same As Normal
Drive Shafts & Boots	Inspect	15,000	Inspect	7,500 or 6 mos.
Electronic Throttle Control	Inspect	15,000	Inspect	Same As Normal
Exhaust Pipe & Muffler	Inspect	15,000	Inspect	Same As Normal
Front Brake Disc / Pads, Calipers	Inspect	15,000	Inspect	More Frequently
Rear Brake Drums / Linings Rear Brake Disc / Pads	Inspect	15,000	Inspect	More Frequently
Steering Gear Box, Linkage & Boots/ Lower Arm Ball Joint, Upper Arm Ball Joint	Inspect	15,000	Inspect	More Frequently
Suspension Mounting Bolts	Inspect	15,000	Inspect	Same As Normal
Brake/Clutch Fluid	Inspect	30,000	Inspect	Same As Normal
Fuel Filter	Inspect	30,000	Inspect	Same As Normal
Fuel Lines, Fuel Hoses and Connections	Inspect	30,000	Inspect	Same As Normal
Fuel Tank Air Filter	Inspect	30,000	Inspect	Same As Normal
Parking Brake	Inspect	30,000	Inspect	More Frequently
Vapor Hose, Fuel Tank & Fuel Filler Cap	Inspect	30,000	Inspect	Same As Normal
Manual Transmission Fluid	Inspect	37,500	Replace	75,000
Drive Belt (Alt, A/C)	1st Inspect 60,000 or 72 mos. Add'l Inspect 15,000 or 24 mos.		Inspect	Same As Normal
Spark Plugs (Iridium Coated)	Replace	100,000 or 10 yrs.	Replace	More Frequently
Coolant	1st Replace 120,000 or 10 yrs. Add'l Replace 30,000 or 24 mos.		Replace	Same As Normal
Automatic Transmission Fluid	No check, No service required		Replace	60,000

*See Owner's Manual for details.

Looking for more detailed information? This Quick Reference Guide does not replace your vehicle's Owner's Manual. If you require additional information or are unsure of a specific issue, you should always refer to the vehicle's Owner's Manual or contact your authorized Hyundai dealer.

The information contained in this Quick Reference Guide was correct at the time of printing; however, specifications and equipment can change without notice. No warranty or guarantee is being extended in this Quick Reference Guide, and Hyundai reserves the right to change product specifications and equipment at any time without incurring obligations. Some vehicles are shown with optional equipment. Specifications apply to U.S. vehicles only. Please contact your Hyundai dealer for current vehicle specifications.

HYUNDAI ELANTRA

Quick Reference Guide



HYUNDAI www.hyundai.com

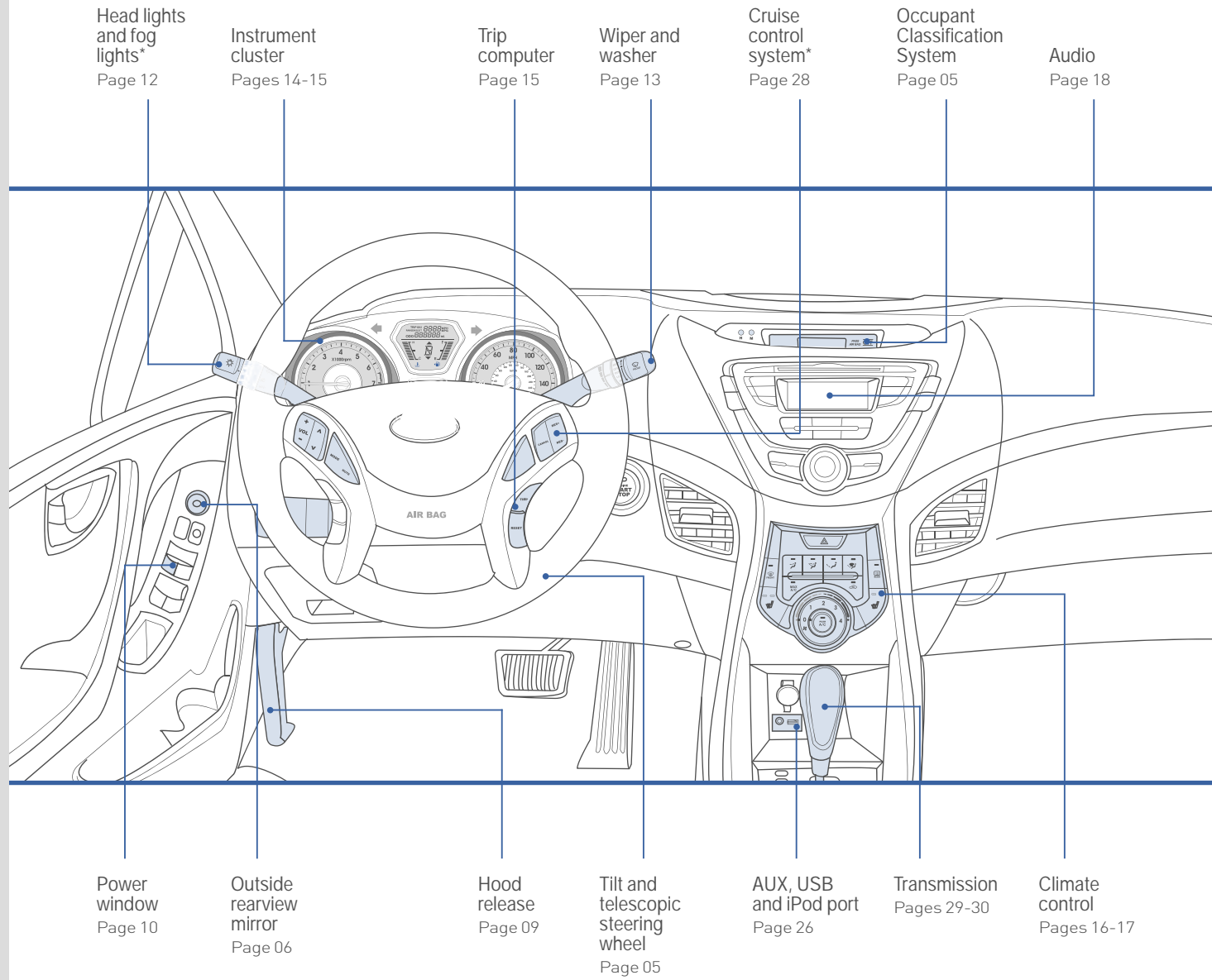
Roadside Assistance: **1-800-243-7766**

Consumer Affairs: **1-800-633-5151**

XM® Radio: **1-800-967-2346**

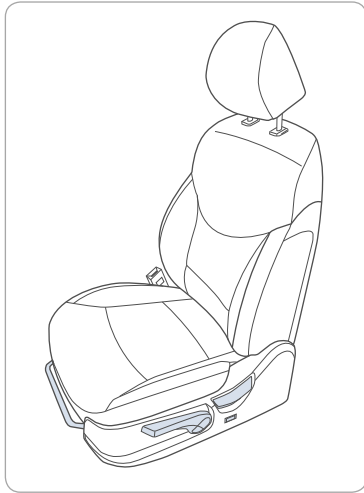
Table of Contents

Audio	18
AUX, USB and iPod port	26
Basic safety precautions	04
Bluetooth phone operation*	20
Central door lock switch	07
Child-protector rear door lock	09
Climate control	16-17
Clock adjustment	25
Cruise control system*	28
ECO system	31
Electronic Stability Control (ESC)	31
Engine start/stop button*	03
Front seat adjustment	02
Fuel filler lid	10
Head lights and fog lights*	12
Headrest adjustment	02
Hood release	09
Inside rearview mirror	06
Instrument cluster	14-15
Instrument panel illumination	15
Interior lights	25
Navigation*	22-23
Occupant Classification System	05
Outside rearview mirror	06
Power window	10
Rear seat folding	03
Rearview camera*	26
Remote keyless entry	07
Seat belt adjustment	04
Seat warmer*	24
Smart key*	08
Steering wheel remote control	19
Sunroof*	11
Tilt and telescopic steering wheel	05
Tire Pressure Monitoring System (TPMS)	27
Transmission	29-30
Trip computer	15
Wiper and washer	13



*if equipped

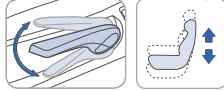
FRONT SEAT ADJUSTMENT



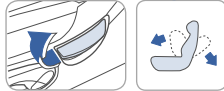
Forward and backward



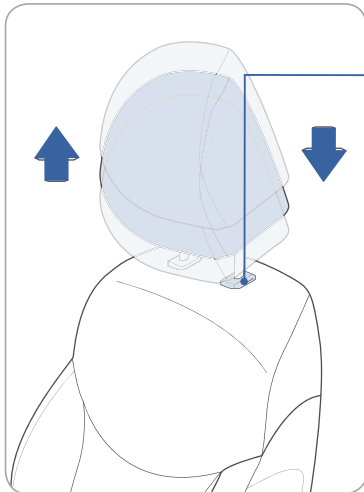
Seat cushion height (for driver's seat)



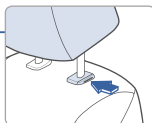
Seatback angle



HEADREST ADJUSTMENT



Height adjustment

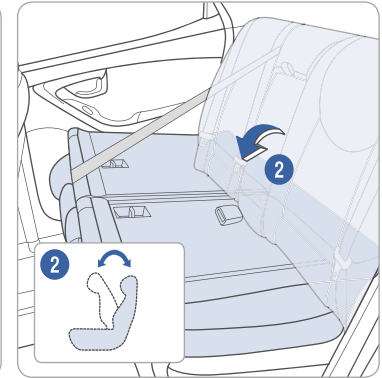
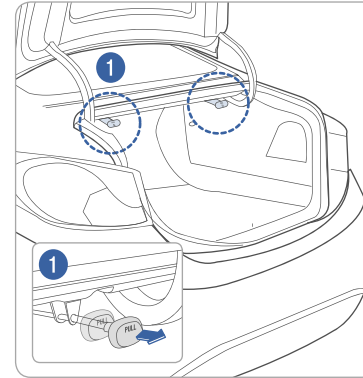


Lock knob

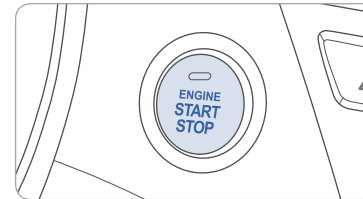
To raise headrest height, pull up on headrest.

To lower headrest, press lock knob while pushing down on headrest.

REAR SEAT FOLDING



ENGINE START/STOP BUTTON (if equipped)



With the ignition OFF, press the engine start/stop button:

- Once for ACC (Accessory) mode.
- Twice for ON mode.
- Three times for OFF.

To start the engine in any mode (including OFF), press the engine start/stop button while pressing the brake pedal.

To shut the engine OFF, place shift lever in P (Park) and press the engine start/stop button.

Emergency situations

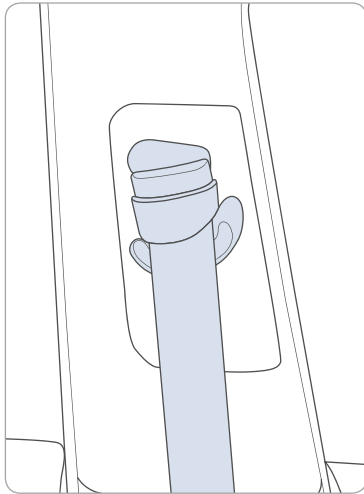
Shut off engine while driving

Press engine start/stop button for more than 2 seconds or press it 3 times consecutively within 3 seconds.

Restart engine while driving

Press engine start/stop button with shift lever in N (Neutral).

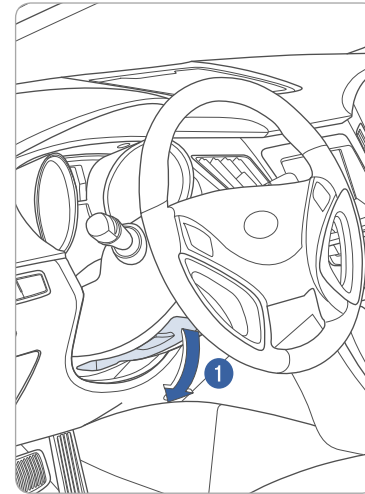
SEAT BELT ADJUSTMENT (Front seat)



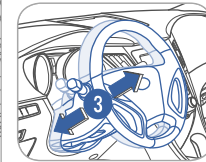
Pull up to raise.

Press button and push down to lower.

TILT AND TELESCOPIC STEERING WHEEL



Tilt



Telescopic
(if equipped)

NOTE: Do not adjust while driving.

1. Pull the lever **1** downward.
2. Set the angle **2** and distance **3** (if equipped).
3. Pull the lever **1** upward.

BASIC SAFETY PRECAUTIONS

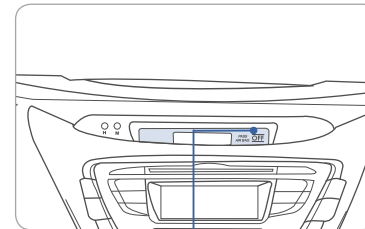
Whenever operating the vehicle, make sure that you and your occupants are properly wearing your seat belts. Small children should always ride in the rear seat in the appropriate child restraint system (see the Owner's Manual for child safety details). Never place children under 13 years old in the front seats to avoid injury that may result from air bag deployment. Always refer to the Owner's Manual for complete safety precaution information.

NOTE

If the driver's seat belt is not fastened when the ignition key is turned to the ON or START position, the seat belt reminder light will blink and the warning chime will sound for approximately six seconds to remind the driver to fasten the driver's seat belt.

OCCUPANT CLASSIFICATION SYSTEM

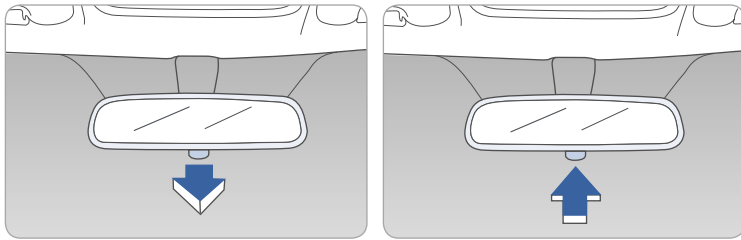
With Standard Radio



Passenger air bag off indicator light

The Occupant Classification System will disable the right front passenger's air bag under certain conditions (light on). The light will not illuminate when the passenger's air bag is enabled. Refer to the Owner's Manual for a complete description of this system.

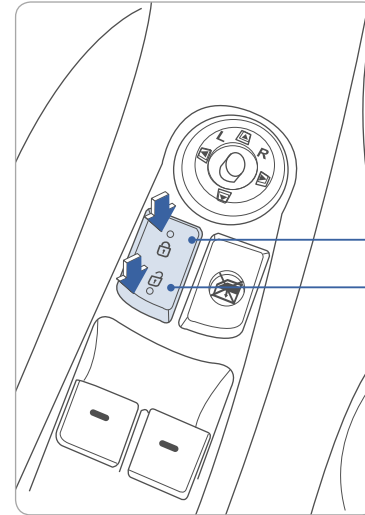
INSIDE REARVIEW MIRROR



Day/night rearview mirror

Pull the day/night lever toward you to reduce glare from the headlights of vehicles behind you during night driving.

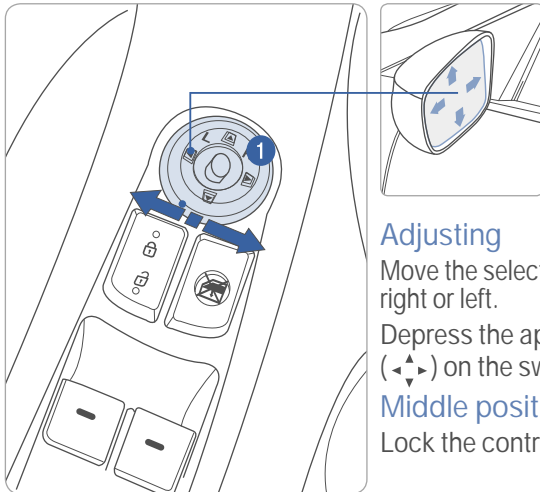
CENTRAL DOOR LOCK SWITCH



All doors will lock.

All doors will unlock.

OUTSIDE REARVIEW MIRROR



Adjusting

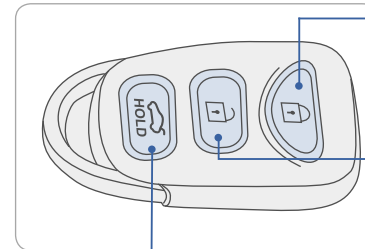
Move the selecting switch **1** to the right or left.

Depress the appropriate direction (↕) on the switch.

Middle position

Lock the control.

REMOTE KEYLESS ENTRY



Lock (🔒)

Press the button.
Once - Lock
Twice - Confirmation chirp

Unlock (🔓)

Press the button.
Once - Unlock driver's door
Twice - Unlock all doors

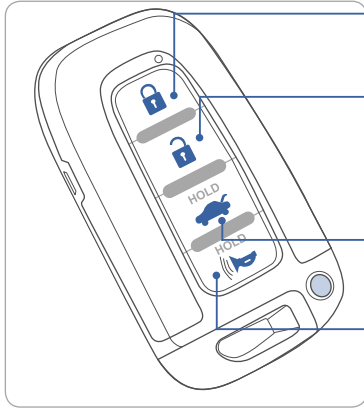
Trunk unlock (🚗)

Press and hold.

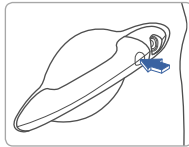
Panic (📢)

Press and hold.
Press any button except the trunk button to turn off panic.

SMART KEY (if equipped)

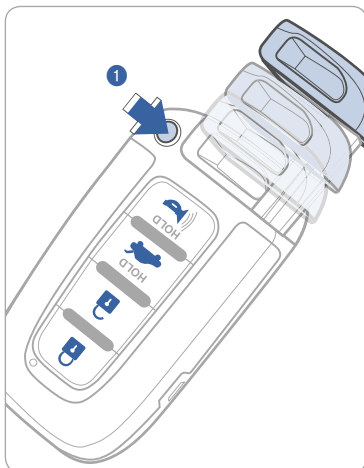


- Lock** (🔒)
Press the button.
- Unlock** (🔓)
Press the button.
Once - Unlock driver's door
Twice - Unlock all doors
- Trunk unlock** (🚪)
Press and hold.
- Panic** (📢)
Press and hold.
Press any button to turn off panic.



Driver's door Lock/Unlock
Smart key must be within range.

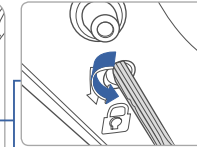
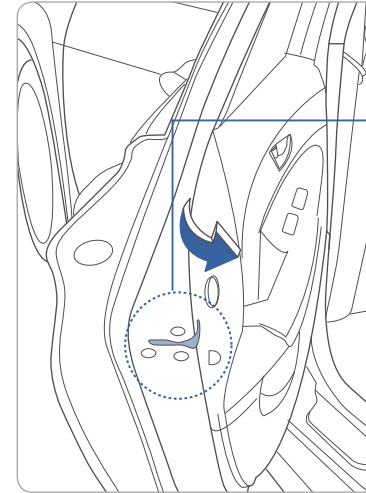
- Press:**
- Once - Unlock driver's door
 - Twice - Unlock all doors
 - Third - Lock all doors



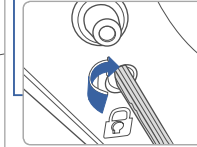
Remove mechanical key
Press and hold the release ① button and remove the key.

Reinstall mechanical key
Put the key into the hole and push it until a click sound is heard.

CHILD-PROTECTOR REAR DOOR LOCK

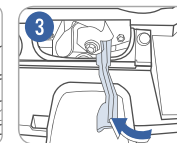
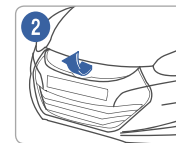
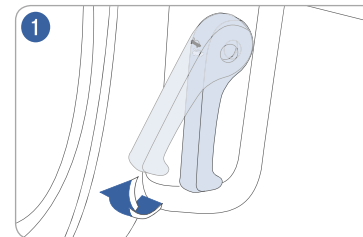


Lock (🔒)
Insert a key into the hole and turn it to the lock (🔒) position.



Unlock (→)
Allows opening the rear door handle from inside and outside the vehicle.

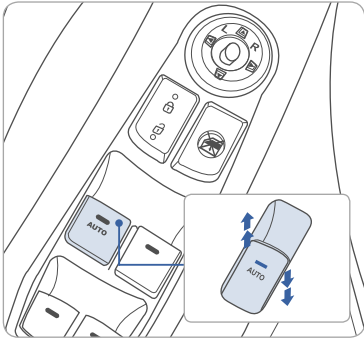
HOOD RELEASE



Opening the hood

- ① Pull the release lever to unlatch the hood.
- ② Raise the hood slightly.
- ③ Pull the secondary latch inside of the hood center and lift the hood.

POWER WINDOW



Open

Press down the window switch.

Close

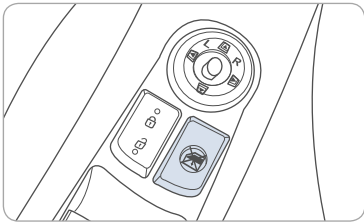
Pull up the window switch.

Auto down

Press fully down to open window automatically.

Auto up (if equipped)

Pull fully up to close window automatically.



POWER WINDOW LOCK SWITCH

The driver can disable the power window switches on the passenger doors.

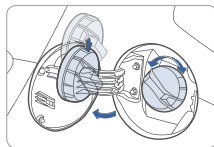
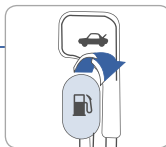
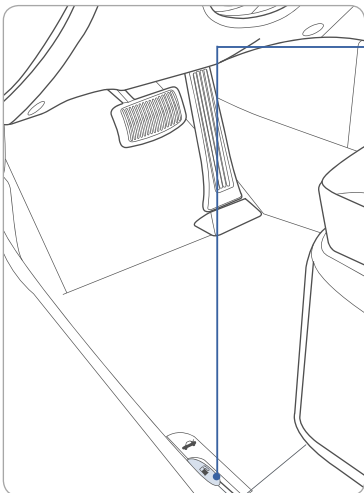
Lock

Press the switch. (pressed in)

Unlock

Press the switch again. (pressed out)

FUEL FILLER LID



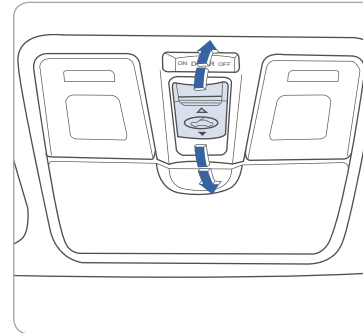
NOTE

After adding fuel, always reinstall the fuel cap onto the filler neck by rotating it clockwise until it clicks one time.

Failure to do this may result in the Check Engine Light illuminating.

SUNROOF (if equipped)

Sliding the sunroof



Open

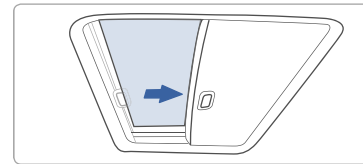
Press switch rearward.

Press switch rearward past the detent to open completely.

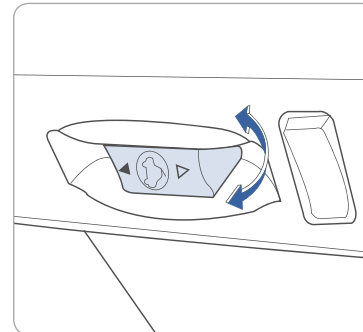
Close

Press switch forward.

Press switch forward past the detent to close completely.



Tilting the sunroof

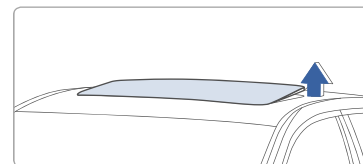


Tilt

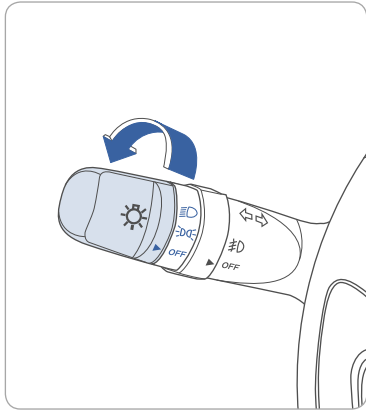
Push or pull switch up or forward.

NOTE

Do not leave the sun shade closed while the sun roof is open.



HEAD LIGHTS AND FOG LIGHTS (if equipped)

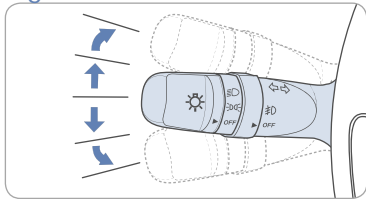


- ▶ | OFF OFF position
Daytime running light on
- ▶ | Parking light position
- ▶ | Head light position

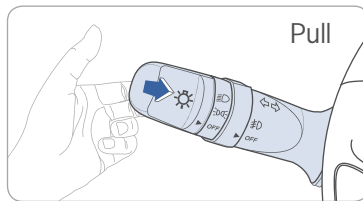
Escort function

Head lights will stay on for approximately 30 seconds after exiting and locking vehicle. Press remote lock button twice to turn head lights off. See Owner's Manual for more detail.

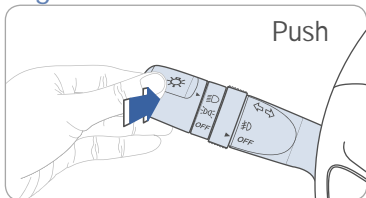
Turn signals and lane change signals



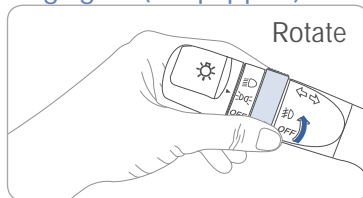
Flashing head lights



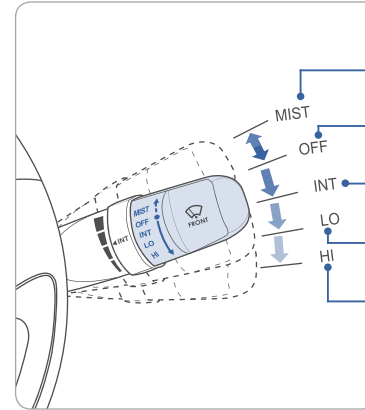
High beam



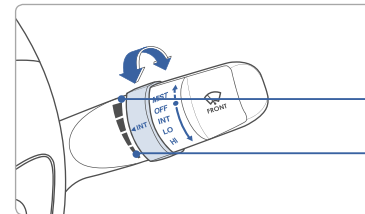
Fog lights (if equipped)



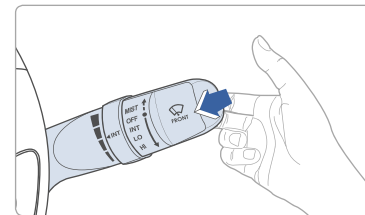
WIPER AND WASHER



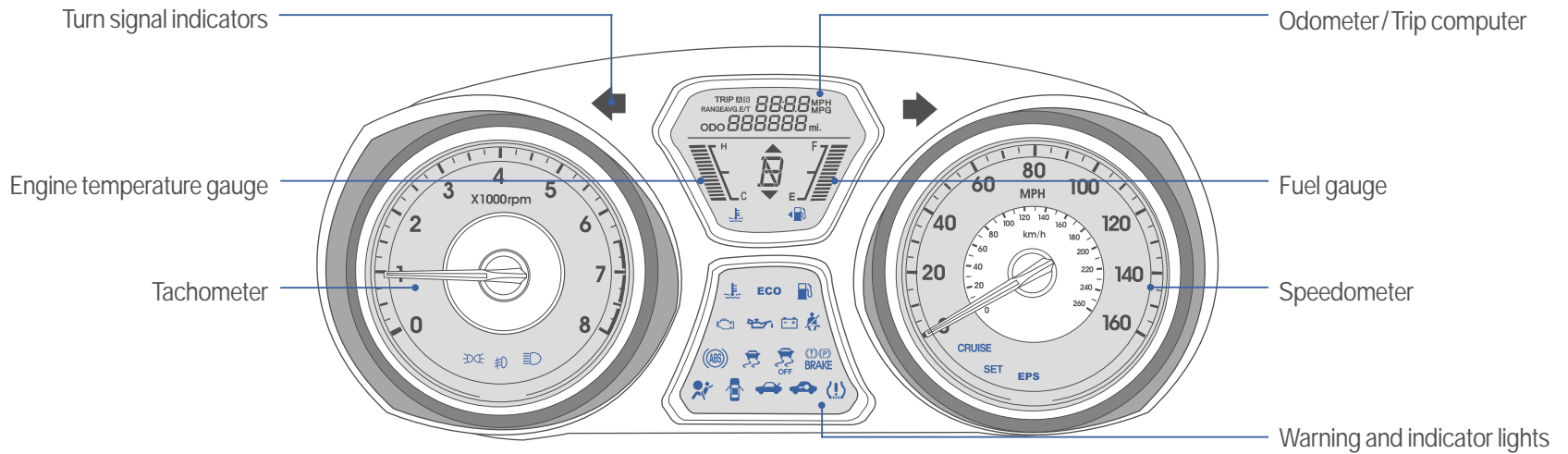
- MIST - Single wipe
- OFF - Off
- INT - Intermittent wipe
- LO - Slow wiper speed
- HI - Fast wiper speed



Intermittent wipe time adjustment



Wash with brief wipes

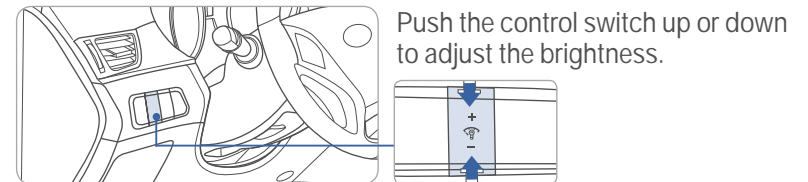


WARNINGS AND INDICATORS

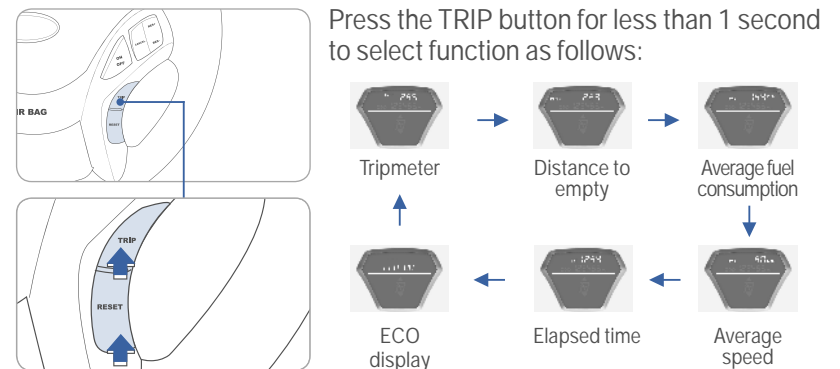
Air bag warning light	Parking brake & Brake fluid warning light	ABS warning light
Seat belt warning light	Low Tire Pressure Indicator / TPMS (Tire Pressure Monitoring System) malfunction indicator	
High beam indicator	Engine oil pressure warning light	Charging system warning light
Electric Power Steering system warning light	Door open warning light	Turn signal indicator
Immobilizer indicator	Automatic transmission shift indicator*	Manual transmission shift indicator
Trunk open warning light	Low fuel level warning light	ESC (Electronic Stability Control) indicator
ESC (Electronic Stability Control) OFF indicator	CRUISE Cruise indicator*	SET Cruise SET indicator*
Malfunction indicator light	Front fog light indicator*	ECO ECO indicator*
Light on indicator	Engine coolant temperature warning light	

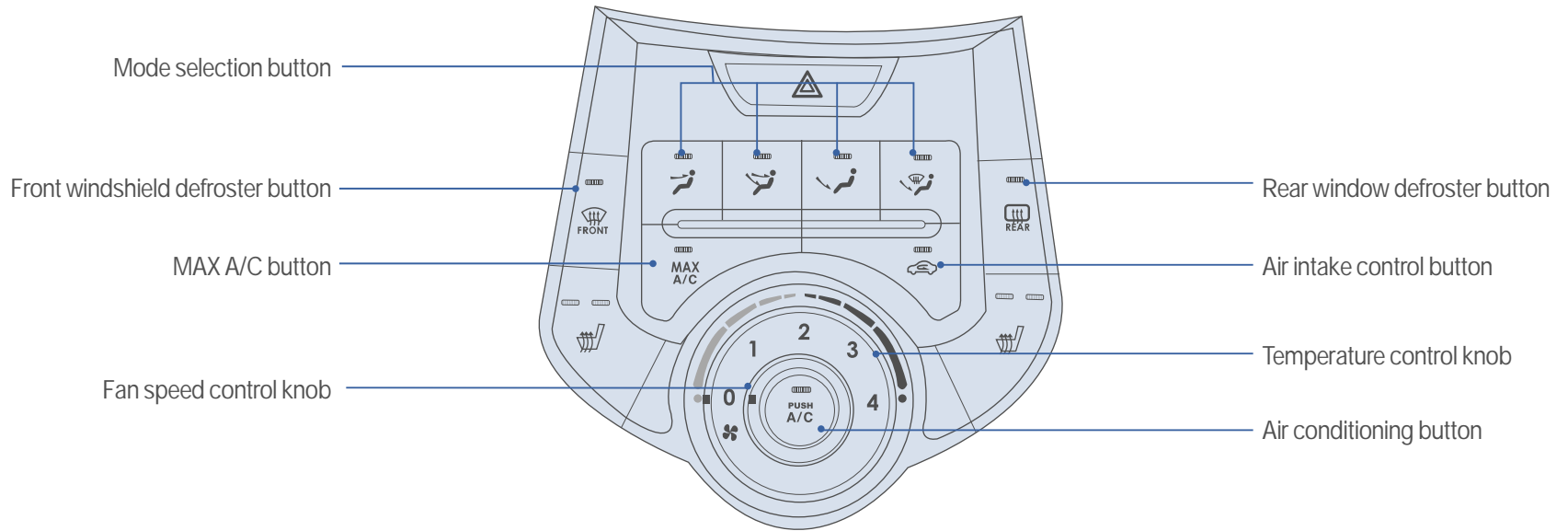
*If equipped

INSTRUMENT PANEL ILLUMINATION



TRIP COMPUTER





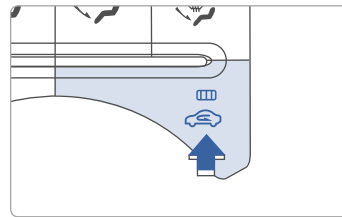
DEFROSTING / DEFOGGING

1. Press the front windshield defrost control.
2. Set the temperature control to the warmest setting.
3. Set the fan speed to the highest setting.

NOTE

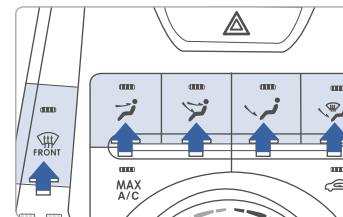
To reduce tendency of the glass fogging and also to improve visibility, keep the interior surface of the windshield clean by wiping it with a clean cloth and glass cleaner.

AIR INTAKE CONTROL



- Outside (fresh) air position
- Recirculated air position

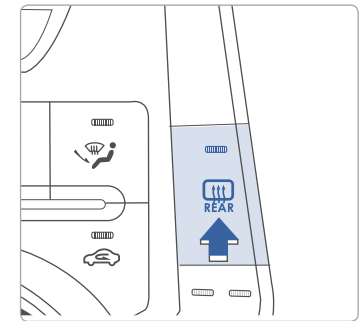
MODE SELECTION



Changing the direction of the air flow as follows:

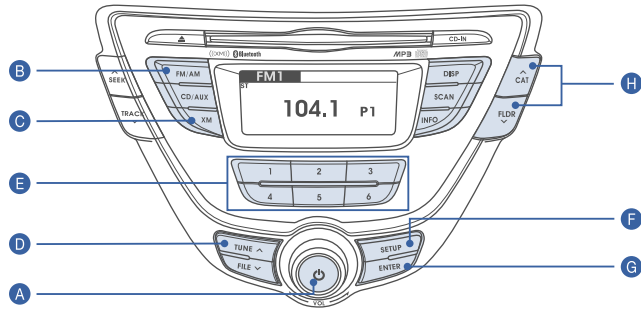
- Face Level
- Bi-Level
- Floor Level
- Floor & Defrost Level
- Defrost Level

REAR WINDOW DEFROSTER



Press to activate/deactivate the rear window defroster.

AUDIO



Press POWER button **A** to turn radio on.

• TUNING/LISTENING TO CHANNELS

1. Press FM/AM **B** or XM[®] **C**.
2. Press TUNE/FILE **D** switch up or down to desired channel.

NOTE

A clear view of the southern sky is recommended to ensure XM[®] radio reception.

• SETTING PRESET MEMORY BUTTONS (FM/AM/XM[®])

Press and hold any preset button (1-6) **E** until audible beep is heard to store current channel.

• ADJUSTING THE SOUND CONTROL

1. Press SETUP **F**.
2. Move to "Audio" item by rotating VOLUME **A** knob; then press ENTER **G** to select.
3. Select "Bass / Mid / Tre / Fad / Bal" by rotating VOLUME **A** knob; then press ENTER **G** to select.
4. Rotate VOLUME **A** knob to adjust; then press ENTER **G**.
5. Press SETUP **F** when done.

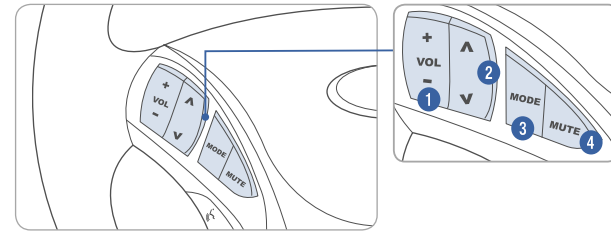
• SELECTING FILE [FOLDER] THROUGH SEARCH (CD/USB MODE)

1. Press the \wedge TUNE/FILE \vee **D**; \wedge CAT/FLDR \vee **H** buttons to search for desired display file folder.
2. Press ENTER button **G** to select the desired file folder.

Please refer to your Owner's Manual for more detailed information on how to use your audio system. Complimentary XM[®] subscription ends three months following the vehicle date of sale. Please contact XM[®] Radio at 1-800-XM-RADIO (1-800-967-2346) to renew your XM[®] subscription.

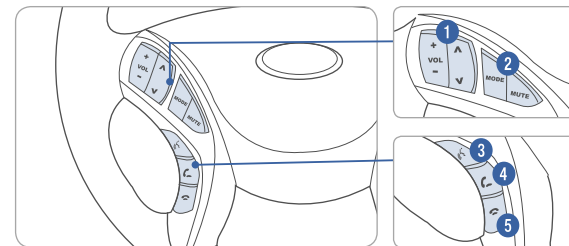
STEERING WHEEL REMOTE CONTROL

Audio control (if equipped)



- 1 VOLUME**
Raises or lowers speaker volume.
- 2 SEEK/PRESET**
Change station.
- 3 MODE**
Change the audio source.
- 4 MUTE**
Mute the sound.

Bluetooth control (if equipped)

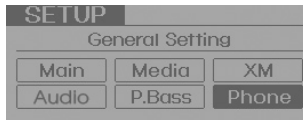
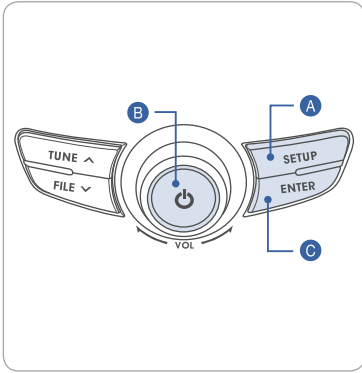


- 1 VOLUME**
Raises or lowers speaker volume.
- 2 MUTE**
Mute the microphone during a call.
- 3 TALK**
Activates voice recognition.
- 4 CALL**
Places and transfers calls.
- 5 END**
Ends calls or cancels functions.

BLUETOOTH PHONE OPERATION (if equipped)

Phone setup (pairing phone) with Audio

1. Push the SETUP button **A**.
2. Select "Phone" item by rotating the VOLUME knob **B**, then press ENTER **C**.



3. Select "Pair" by rotating the VOLUME knob **B**, then press ENTER **C**.



4. Select "ELANTRA" on your mobile phone from the Bluetooth® list.
5. Input passkey displayed on the screen.
6. After Pairing is completed, your phone may start to transfer phone/contact list to the audio system.
 - This process may take a few minutes depending on the phone model and number of entries in the phone/contact list.
 - Some phones may request approval to download phone/contact list to the audio system. (If approval is not granted, the phone may frequently disconnect or not download phone/contact list.)

NOTE

Vehicle must be in park to complete pairing process.

Phone setup (pairing phone) with Navigation

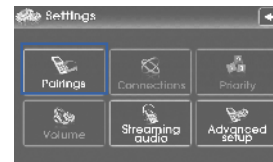
1. Press the call button **1**.
4. Press the **2** "Add to" button to pair a new mobile phone.



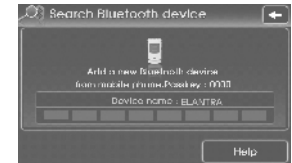
2. Press the "Settings" button on the PHONE screen.



3. Press the "Pairings" button on the SETTINGS screen.



5. Input the passkey set within the car system into the mobile phone input window. (The initial passkey is 0000.)



6. Bluetooth connection is successful.

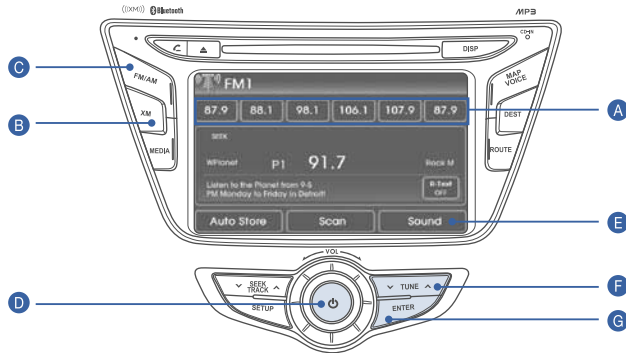


NOTE

Vehicle must be in park to complete pairing process.

NAVIGATION (if equipped)

Audio mode



Press POWER button **D** to turn radio on.

TUNING/LISTENING TO CHANNELS

1. Press FM/AM **C** or XM[®] **B**.
2. Press TUNE button **F** to desired channel.

NOTE

A clear view of the southern sky is recommended to ensure XM[®] radio reception.

SETTING PRESET MEMORY BUTTONS (FM/AM/XM[®])

Press and hold any preset button (1-6) **A** on the screen until audible beep is heard to store current channel.

ADJUSTING THE SOUND CONTROL

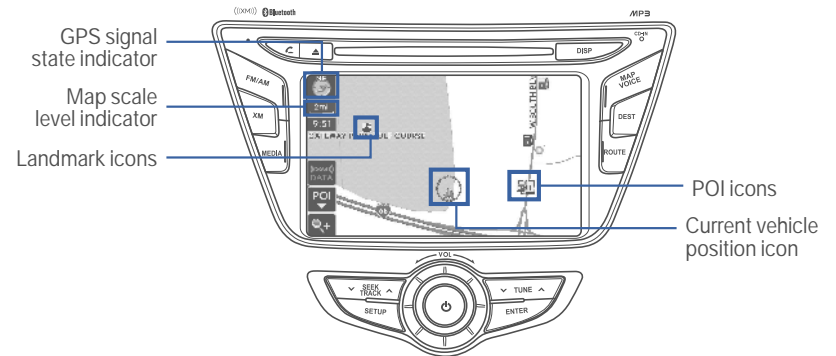
1. Press Sound **E** to enter SETUP menu.
2. Press on-screen arrows to adjust desired setting.



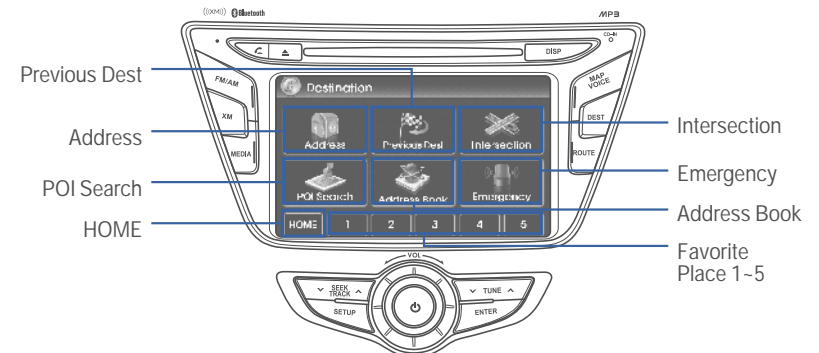
SELECTING TRACK THROUGH SEARCH (CD/USB MODE)

1. Press the ^ TUNE v button **F** to search for desired display track.
2. Press the ENTER button **G** to select the desired track.

Map position

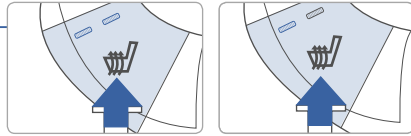
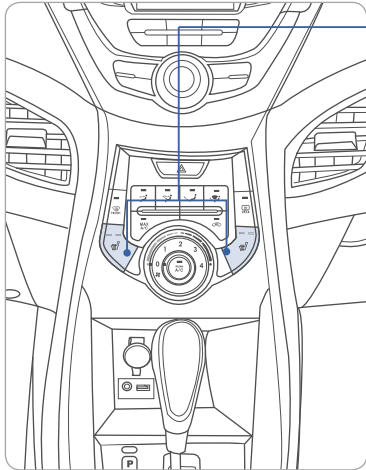


Destination menu



SEAT WARMER (if equipped)

Front seat



Push desired switch to warm the seat.

OFF → HIGH (■■■■) → LOW (■■)

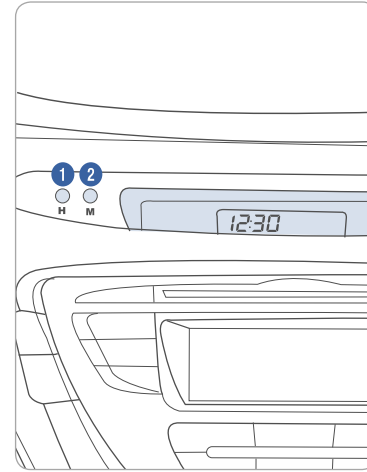
Rear seat



Push the switch to warm the seat.
Push switch again to turn off.



CLOCK ADJUSTMENT



Hour ①

Pressing the H button will advance the time displayed by one hour.

Minute ②

Pressing the M button will advance the time displayed by one minute.

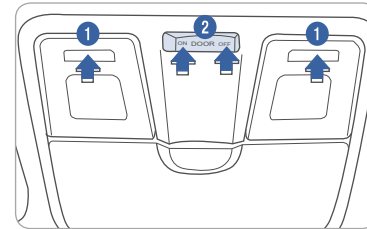
Press the H and M buttons at the same time for more than 5 seconds to toggle between 12- and 24- hour formats.

NOTE

Press and hold H and M button for 3 seconds to change temperature unit next to the clock.

INTERIOR LIGHTS

Map lamp



Push the lens ① to turn the map lamp on or off.

Switch ②

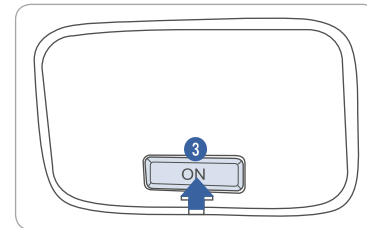
ON

Map lamp and room lamp will turn on.

DOOR

Map lamp and room lamp will turn on when any door is open except trunk.

Room lamp



OFF

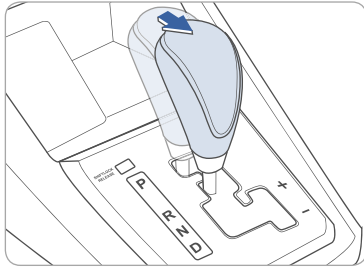
The lights stay off at all times, except when individually turned on.

Switch ③

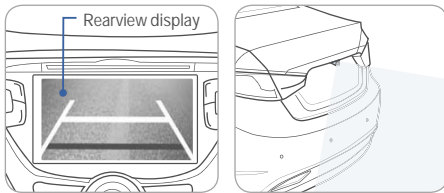
ON

Room lamp will turn on or off.

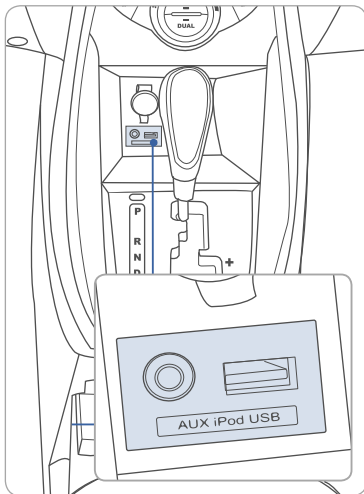
REARVIEW CAMERA (if equipped)



The rearview camera will activate when the ignition switch is turned ON and the shift lever is in the R (Reverse) position.



AUX, USB AND iPod® PORT



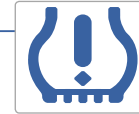
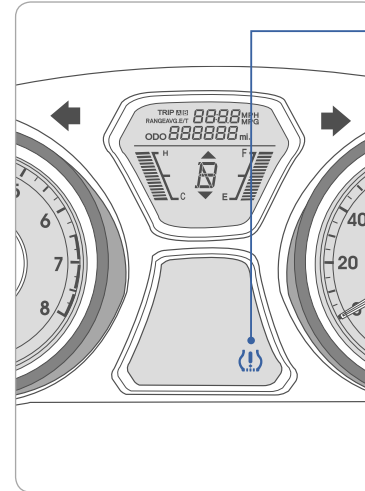
Use the jack to connect an external audio device and listen to it through the audio system speakers in your vehicle.

NOTE

To operate your iPod® through the vehicle's audio system, a Hyundai adapter cable is required. This cable can only be purchased at your local Hyundai dealer.

iPod® is a trademark of Apple Inc.

TIRE PRESSURE MONITORING SYSTEM (TPMS)



Low Tire Pressure Indicator / TPMS Malfunction Indicator

Low Tire Pressure Indicator

Illuminates if one or more of your tires is significantly under-inflated.

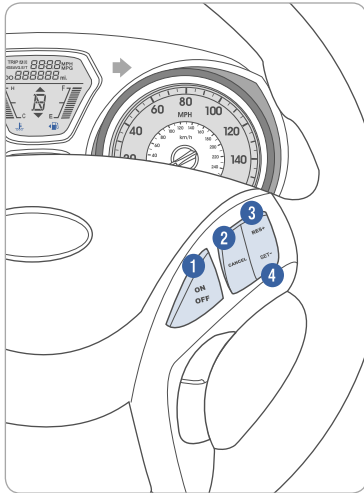
TPMS Malfunction Indicator

Blinks for approximately one minute then remains illuminated when there is a malfunction with the TPMS system. Inspect all tires and adjust tire pressure to specification. If the lamp remains illuminated, have the system checked by an authorized Hyundai dealer as soon as possible.

NOTE

Tire pressure may vary in colder temperatures causing the low tire pressure light (⚠) to illuminate.

CRUISE CONTROL SYSTEM (if equipped)



CRUISE Cruise indicator

SET Cruise set indicator

To set a cruising speed

1. Press ON/OFF button **1** and the CRUISE indicator will illuminate in the instrument cluster. Accelerate to desired cruising speed (above 25 mph).
2. Press SET - button **4** and remove your foot from the accelerator pedal.

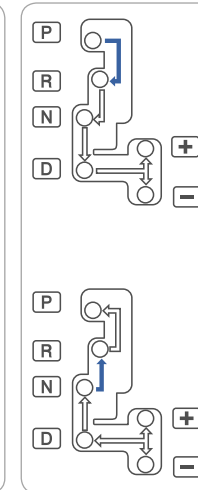
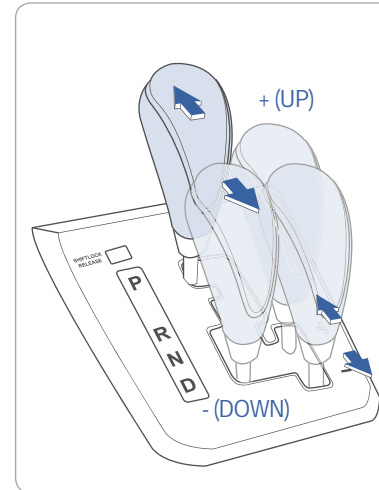
To accelerate or decelerate

Press RES + button **3** up to increase set cruising speed.
Press SET - button **4** down to decrease set cruising speed.

To cancel cruising speed

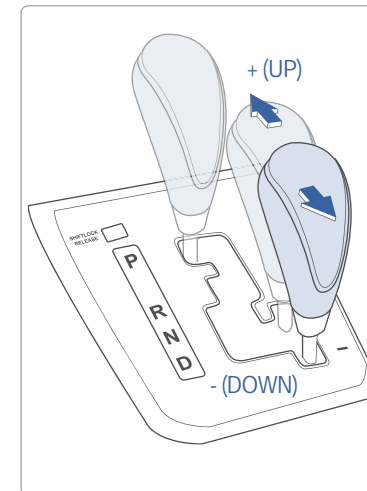
Press CANCEL button **2**, depress brake pedal, or press ON/OFF button **1**.

AUTOMATIC TRANSMISSION (if equipped)



(➡): Depress the brake pedal when shifting.

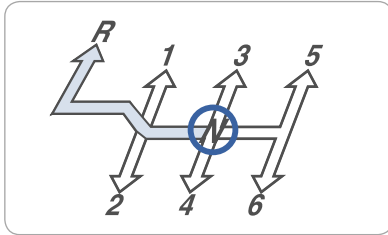
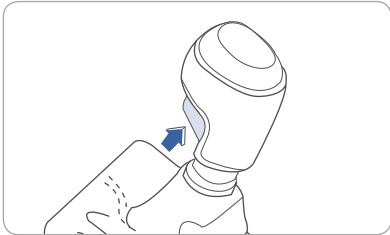
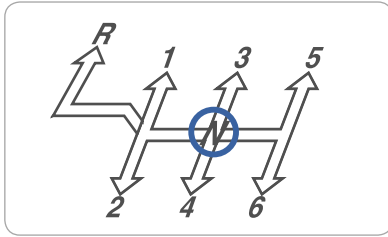
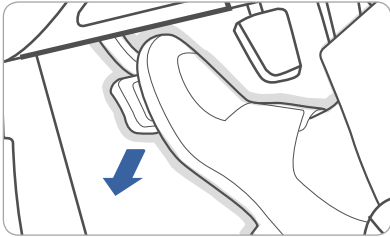
(⇔): The shift lever can be moved freely.



Sport mode

Move the shift lever from D to the right gate to select.
Move the shift lever forward (+) to upshift or rearward (-) to downshift.

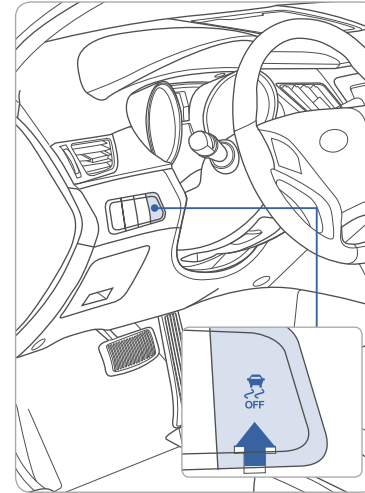
MANUAL TRANSMISSION (if equipped)



Shifting into reverse

1. Depress the clutch pedal fully.
2. Ensure shifter is in Neutral.
3. Press the reverse lock-out button and shift left to Reverse.
4. Release clutch slowly for smooth acceleration.

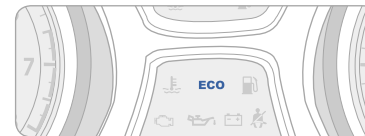
ELECTRONIC STABILITY CONTROL (ESC)



The ESC system is an electronic system designed to help the driver maintain vehicle control under adverse conditions.

- To turn the ESC off, press the ESC OFF button.
- To turn ESC on, press it again.
- System defaults to ON position at start.

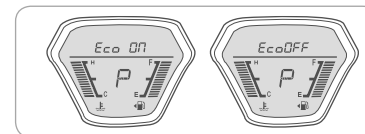
ECO SYSTEM



ECO indicator

The ECO indicator light will illuminate when you drive with high fuel efficiency.

The ECO indicator can be turned off by selecting the function through the trip computer and pressing the reset button for over 1 second; ECO OFF will then appear.



ECO shift indicator (manual transmission)

The ▲ or ▼ symbol is displayed along with the recommended gear number, indicating you should upshift or downshift for higher fuel efficiency.



ELANTRA CUSTOMER DELIVERY CHECK LIST (continued)

Tire Pressure Monitoring System (TPMS) - Page 27



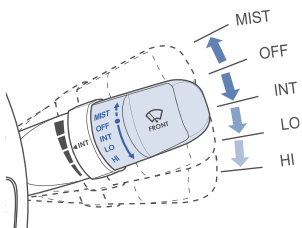
LOW TIRE PRESSURE INDICATOR :

Illuminates if one or more of your tires is significantly under-inflated.

TPMS MALFUNCTION INDICATOR :

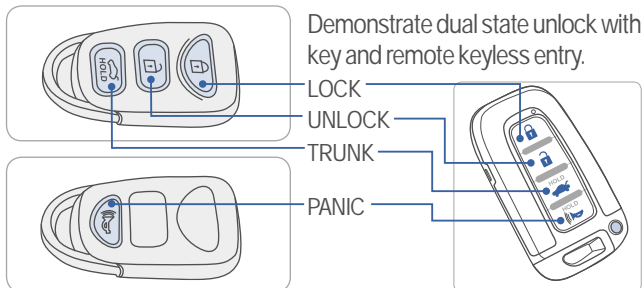
Illuminates after it blinks for approximately one minute when there is a malfunction with the TPMS system. Have the system checked by an authorized Hyundai dealer as soon as possible.

Windshield wiper / washer - Page 13



- To activate wipers, move the switch down to one of the three positions (INT, LO, HI).
- To adjust INT speed, rotate dial.
- To spray washer fluid, pull lever toward you.
- Push lever up for a single wiper pass.

Unlocking vehicle - Page 07



DURING DELIVERY

- HELP CUSTOMER PAIR PHONE WITH BLUETOOTH (if equipped)
- DEMONSTRATE AUDIO SYSTEM OPERATION INCLUDING PRESETS (OPTIONAL - iPod® CABLE AVAILABLE)
- CONSIDER OWNER'S PREVIOUS VEHICLE TO EXPLAIN WIPER/ HEADLIGHT FUNCTIONS
- DEMONSTRATE HOW TO SET THE CLOCK
- EXPLAIN AND REVIEW FIRST SERVICE PROCEDURE AND AMERICA'S BEST WARRANTY - PROVIDE SERVICE REPRESENTATIVE BUSINESS CARD
- ASK IF CUSTOMER HAS ANY QUESTIONS

Sales Consultant _____ Date _____ Sales Manager _____ Date _____

Customer _____ Date _____

@

Email _____

ELANTRA CUSTOMER DELIVERY CHECK LIST

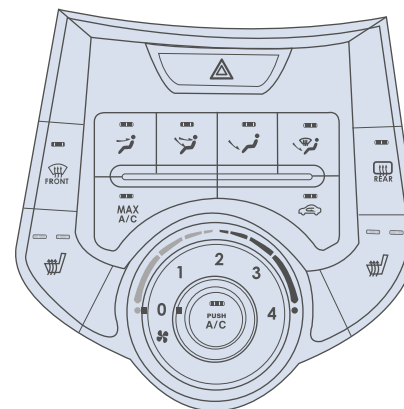
HYUNDAI OWNER	DEALERSHIP NAME
SALES CONSULTANT	DATE
VIN	PREVIOUS VEHICLE

BEFORE DELIVERY

- CONFIRM "GOOD BATTERY" AND STAPLE TEST TICKET HERE
 β MIDTRONICS TEST
- VERIFY ALL TIRE PRESSURES ARE 32PSI
- VERIFY ALL TIRE PRESSURES ARE 33PSI LF LR RF RR
- VERIFY ALL REMOTE FUNCTIONS : LOCK / UNLOCK / ALARM
- VERIFY VEHICLE IS CLEAN, IN GOOD CONDITION, FREE OF CHIPS AND SCRATCHES
- ENSURE FLOORMATS ARE SNAPPED INTO PLACE (if applicable)

WALK THE CUSTOMER THROUGH EACH OF THE FOLLOWING KEY DELIVERY FEATURES

Manual climate control - Page 16-17



β To speed up front windshield defogging, increase temperature, fan speed and then select defrost button.